

AW-CU598

Wi-Fi 6 1x1+ Bluetooth Low Energy 5.3

Microcontroller Module

Reference Design Guide

Rev. 02

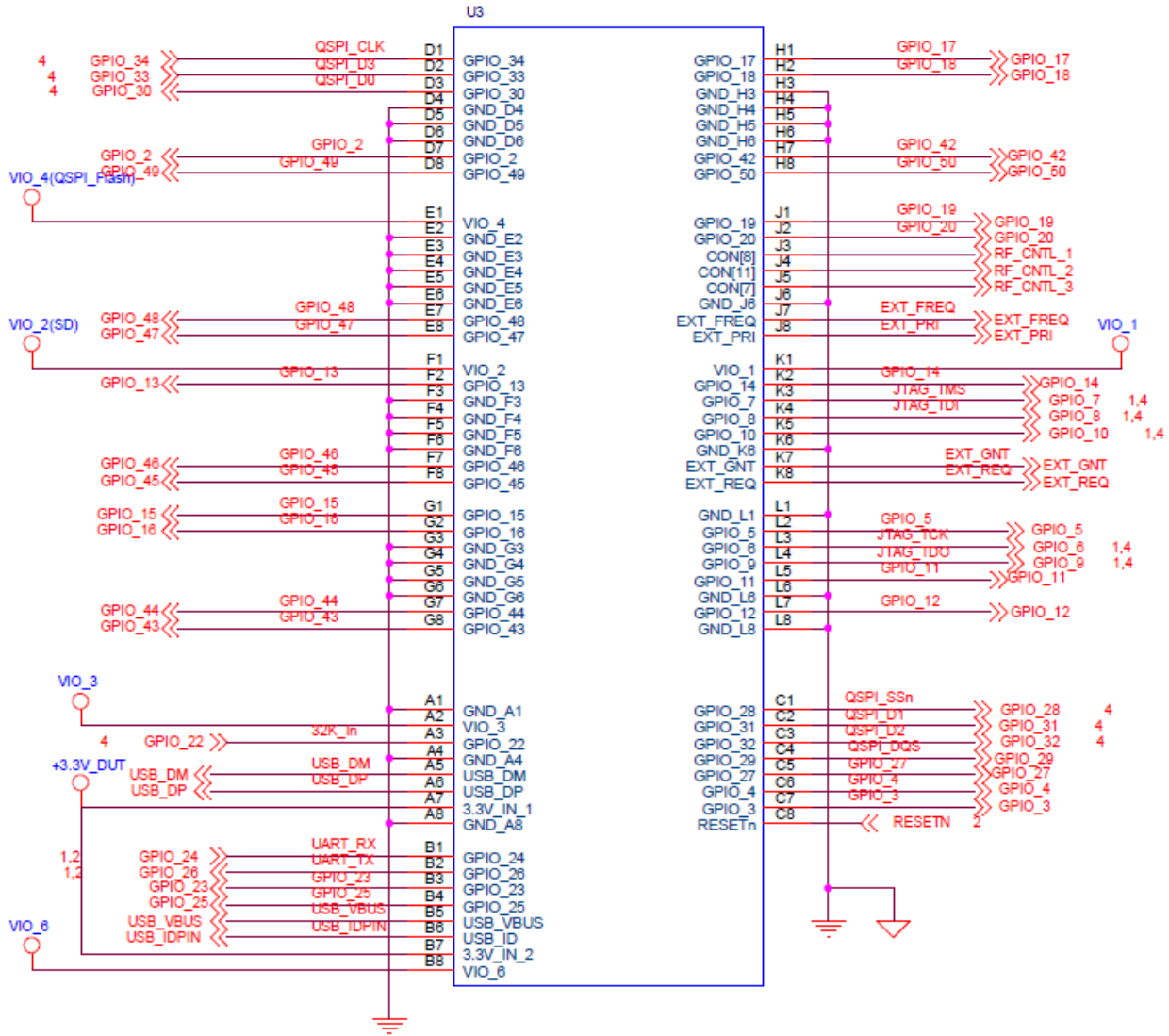
(For Standard)

Revision History

Version	Revision Date	Description	Initials	Approved
01	2023/05/08	● Initial Version	Roger Liu	NC Chen
02	2023/09/06	● Update power on sequence ● Update PDn information	Roger Liu	NC Chen

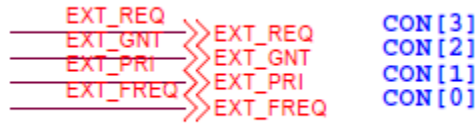
1. Module Pin Define

LGA MODULE PINOUT



AW-CU598

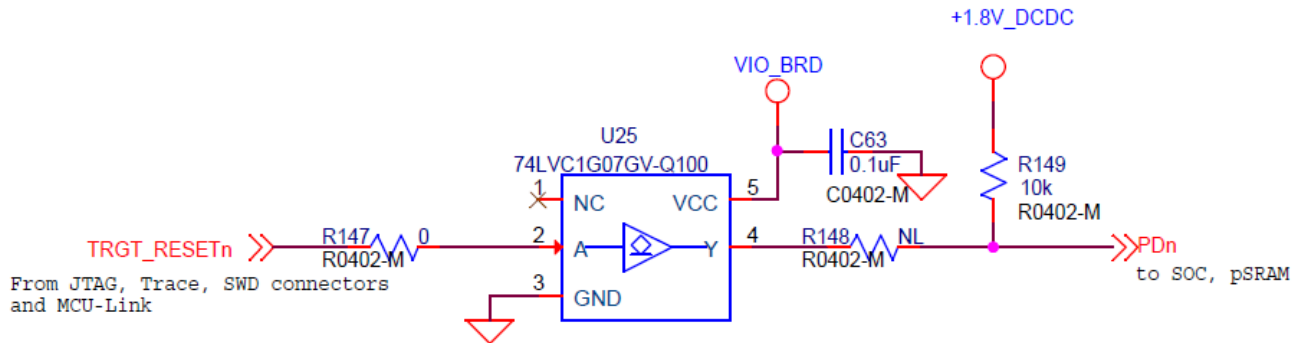
2. STRAP/CONFIG TABLE



[3:0]		CONFIG HOST BOOT[3:0]: ATEST 3,2,1,0 /Configured from outside of the module/
CON[3:0]	Boot	
1111	Boot from QSPI Flash (Default)	
1110	ISP boot	
1101	Serial Boot	
1100	SDIO boot	
1011	USB boot	
1010	SPI EEPROM boot	

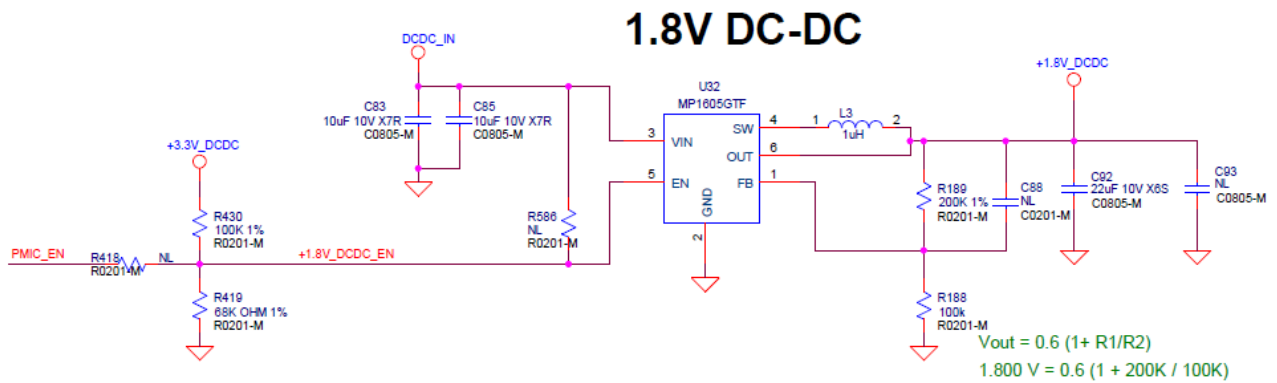
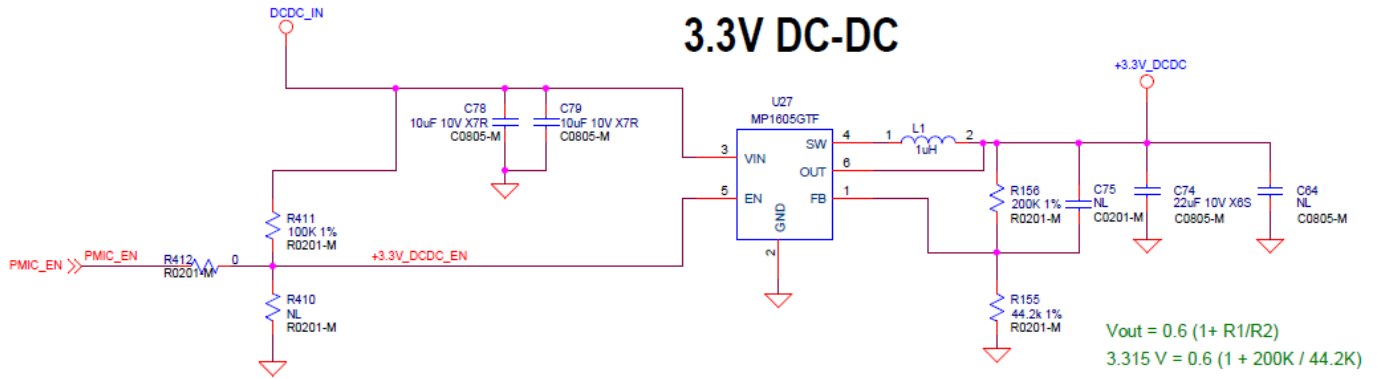
3. PDn pin pull high

*There is internal pull high 51K ohm to 3.3V in module.

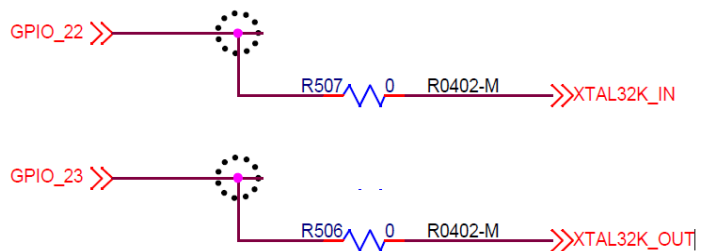
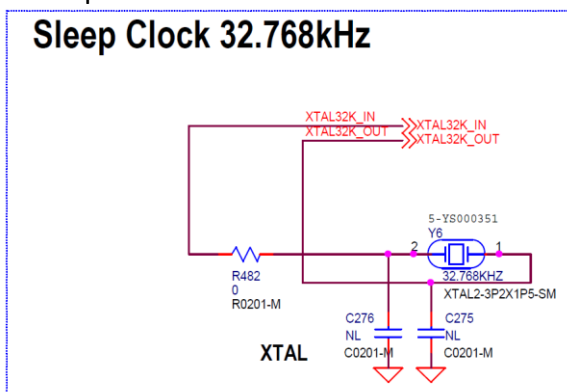


4. Power on sequence

Default Power Sequence :+5V -> +3.3V -> +1.8V



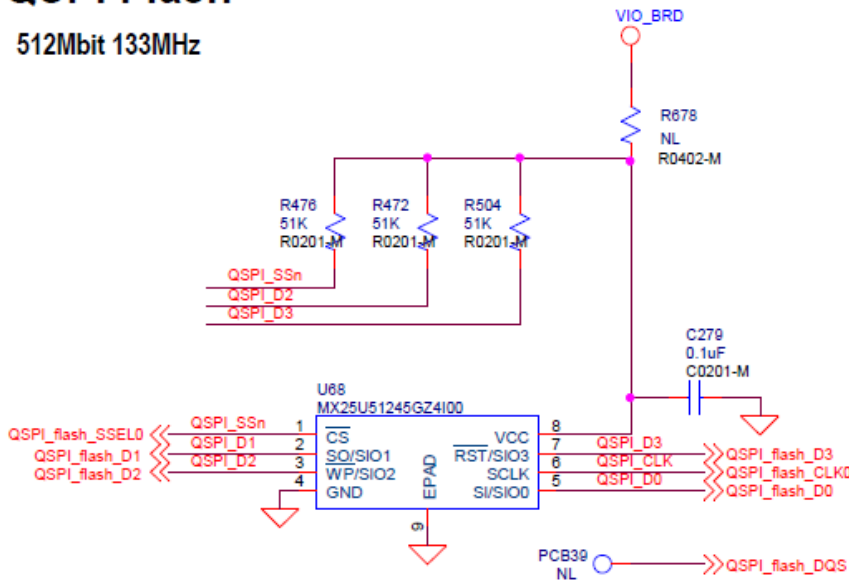
5. Sleep Clock



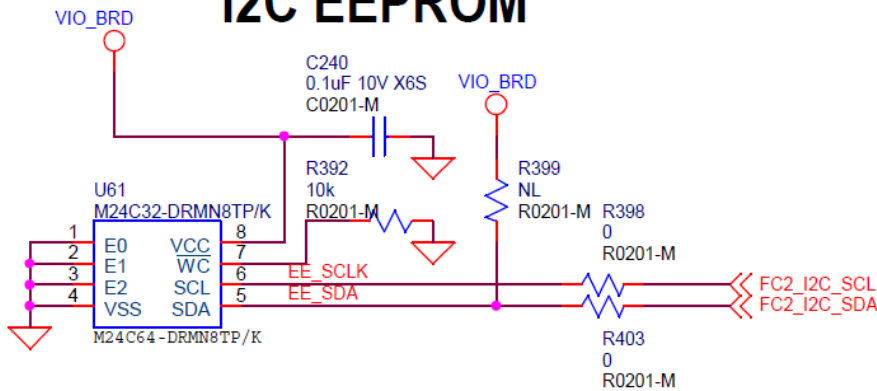
6. Memory

QSPI Flash

512Mbit 133MHz



I2C EEPROM



SPI EEPROM

